

Grid-based geoprocessing web service

EFGS Lisbon
10-13-2011
Pieter Bresters



Content

- What
- Why
- How
- Demo
- Future steps
- Conclusions
- Questions

What

- Grid-based
- Geoprocessing
- Web service

Why

- A proof of concept to feed future plans
- To show the extra value and possibilities of grid data

How

Design

- ArcGis 9.3
 - Model builder

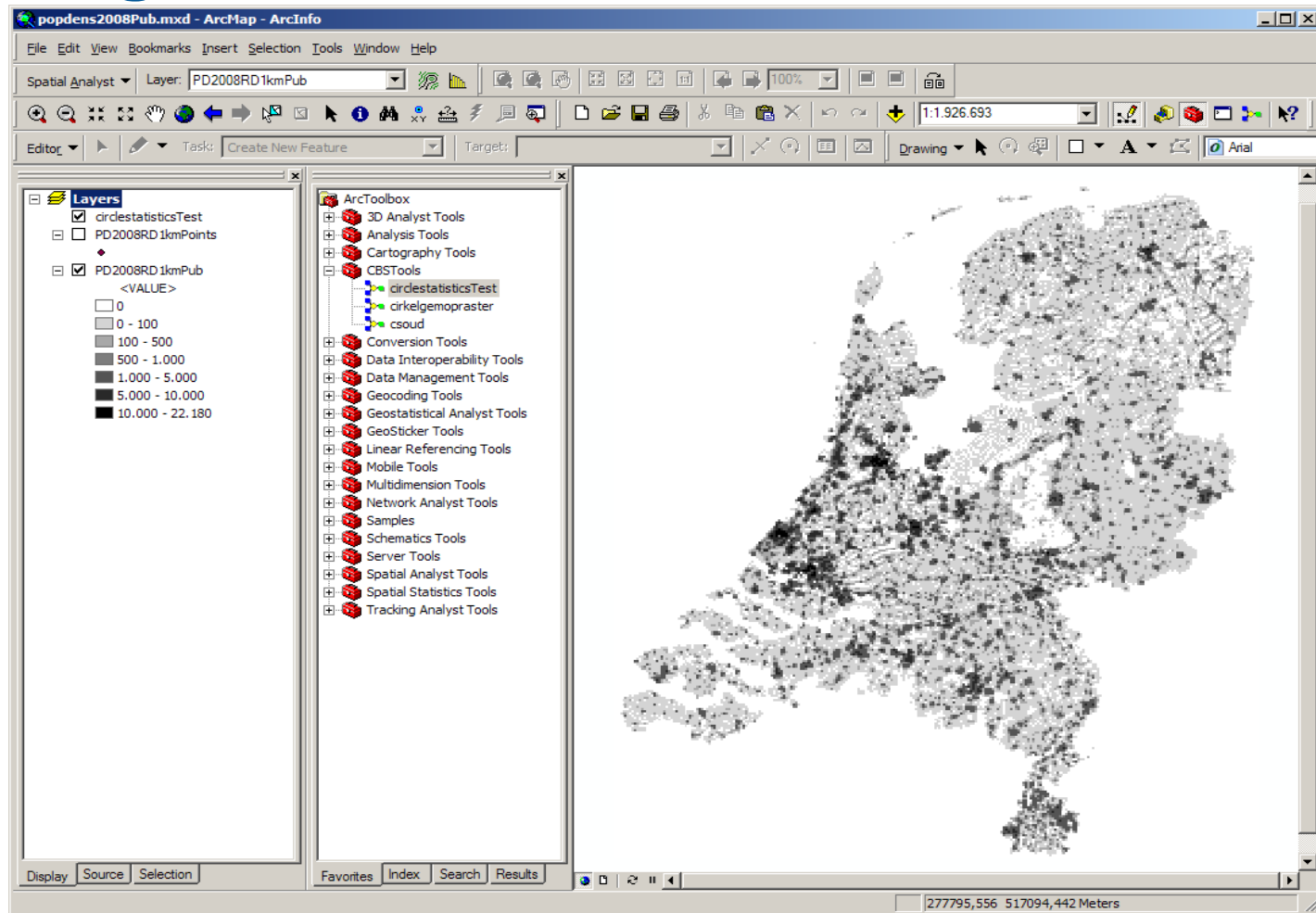
Publish

- ArcGis Server 9.3

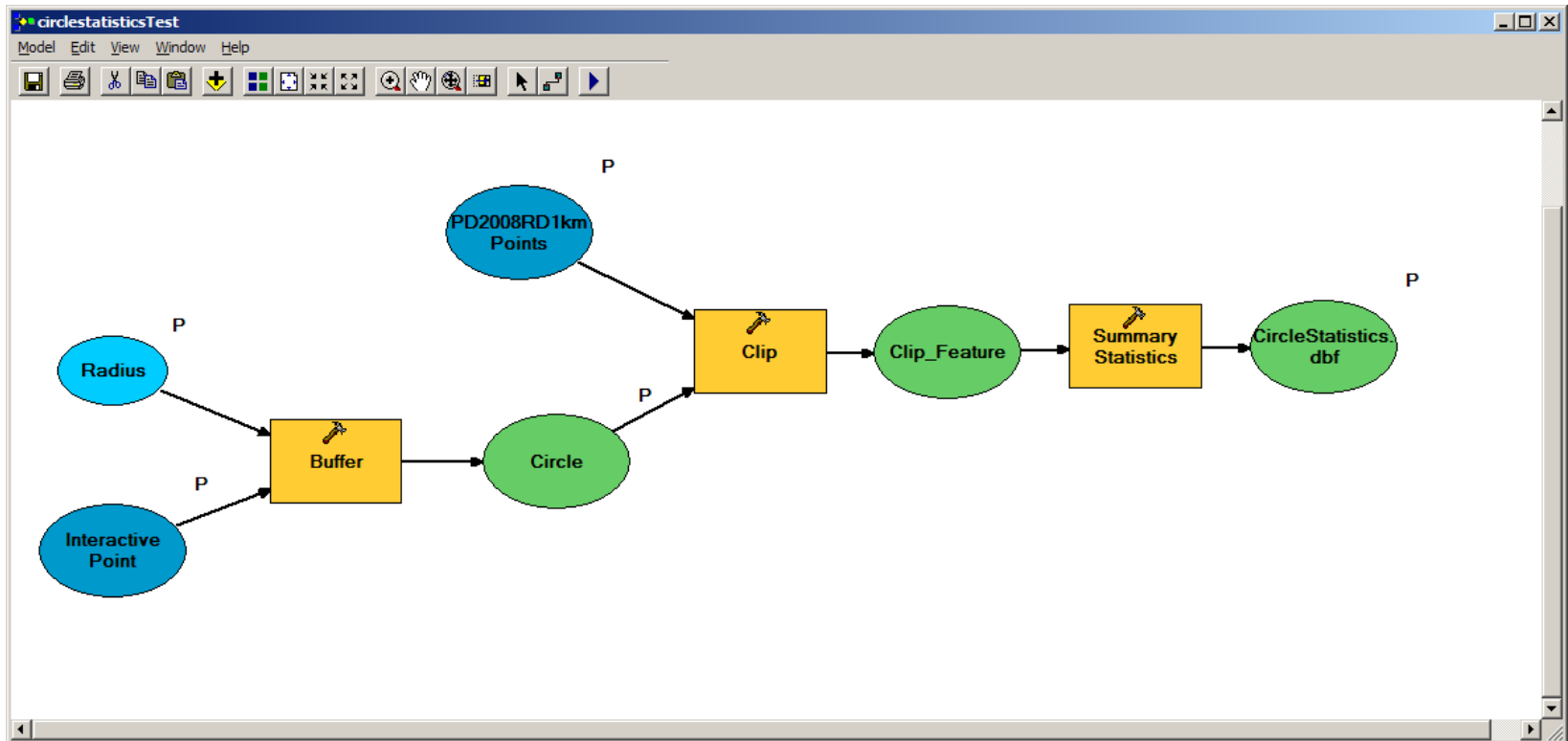
Use

- ArcGIS Explorer (desktop)
- Flex Viewer 2.4

Design: ArcGis



Design: Model builder



Publish: ArcGis Server

ArcGIS SERVER MANAGER
sharing geographic information

Logged in as \cbsgeoservicemanager - Tuesday, September 27, 2011 4:44 PM
Help | Logout

Manage Services

Publish a GIS Resource | Add New Service

Services in: Manage Folders

Start | Stop | Pause | Restart | Delete

<input type="checkbox"/>	Name	Type	Status	Instances (In Use/Running)	Permissions	Edit
<input type="checkbox"/>	BestandBodemGebruik2006	Map Service	Started	0/1		
<input type="checkbox"/>	BestandBodemGebruik2006Gesplitst	Map Service	Started	0/1		
<input type="checkbox"/>	CBSbevolkingskernen2006	Map Service	Started	0/1		
<input type="checkbox"/>	populationNL2008Test	Geoprocessing Service	Started	0/2		
<input type="checkbox"/>	populationNL2008Test	Map Service	Started	0/1		
<input type="checkbox"/>	WijkenBuurten2008	Map Service	Started	0/2		
<input type="checkbox"/>	WijkenBuurten2009	Map Service	Started	0/1		
<input type="checkbox"/>	WijkenBuurten2010	Map Service	Started	0/1		

GIS Server Status

Name: dmzarcgis1
Status: **Online**
Started: 9/22/2011 1:55 PM
Messages: View

Description:
Source: \\DMZARCGIS1\Gisdata\ArcGisServer_Data\popdense2008Pub\popdens2008Pub.mxd
Capabilities: Mapping, OGC (WMS) Service, KML
Pooling: Pooled
Startup: Automatic

URL for geoservices

<http://geoservices.cbs.nl/ArcGis/rest/services>

Folder: /

Current Version: 9.31

View Footprints In: [Google Earth](#)

Services:

[BestandBodemGebruik2006](#) (MapServer)

[BestandBodemGebruik2006Gesplitst](#) (MapServer)

[CBSbevolkingskernen2006](#) (MapServer)

[populationNL2008Test](#) (GPSTest)

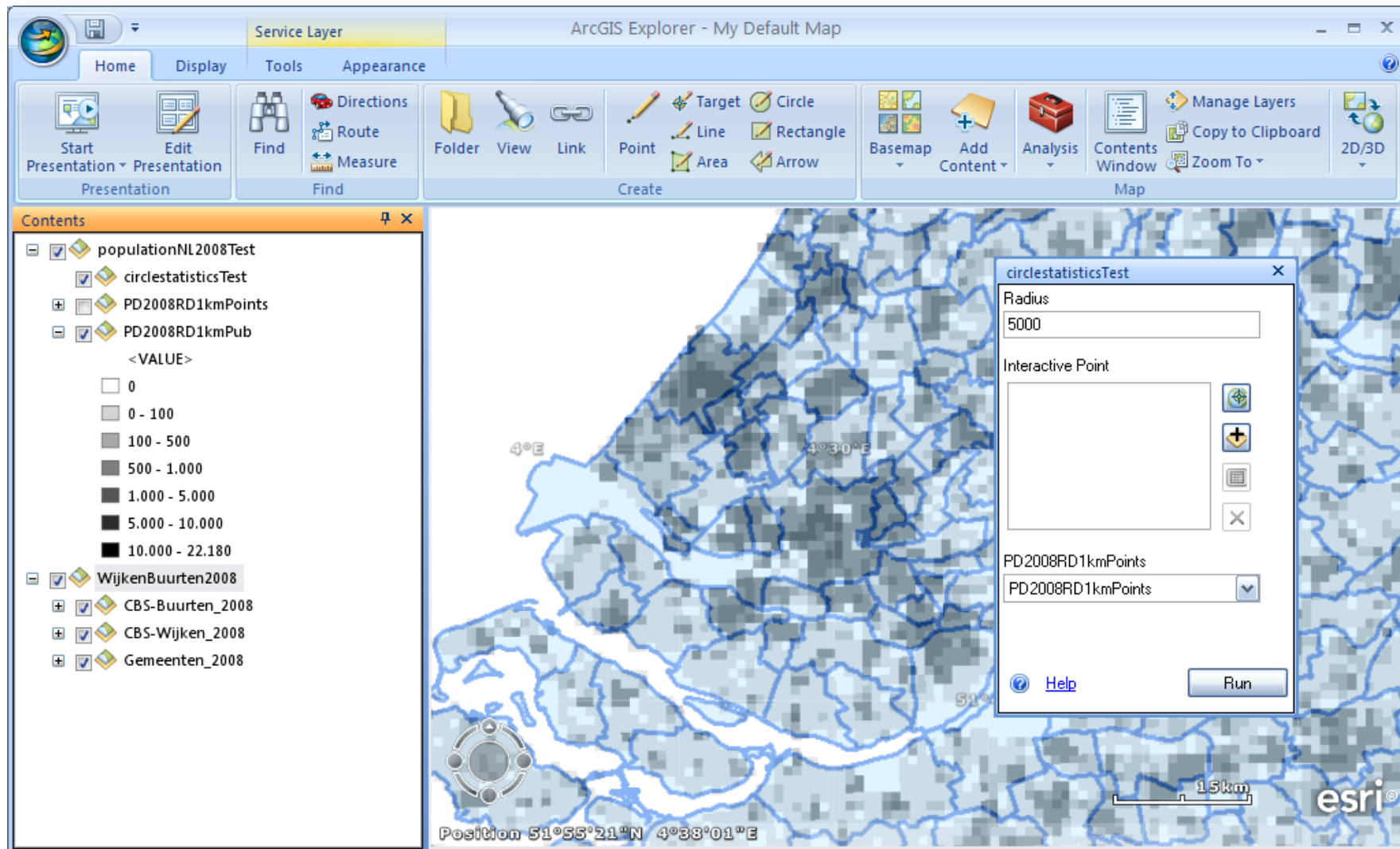
[populationNL2008Test](#) (MapServer)

[WijkenBuurten2008](#) (MapServer)

[WijkenBuurten2009](#) (MapServer)

[WijkenBuurten2010](#) (MapServer)

Use: ArcGIS Explorer (desktop)

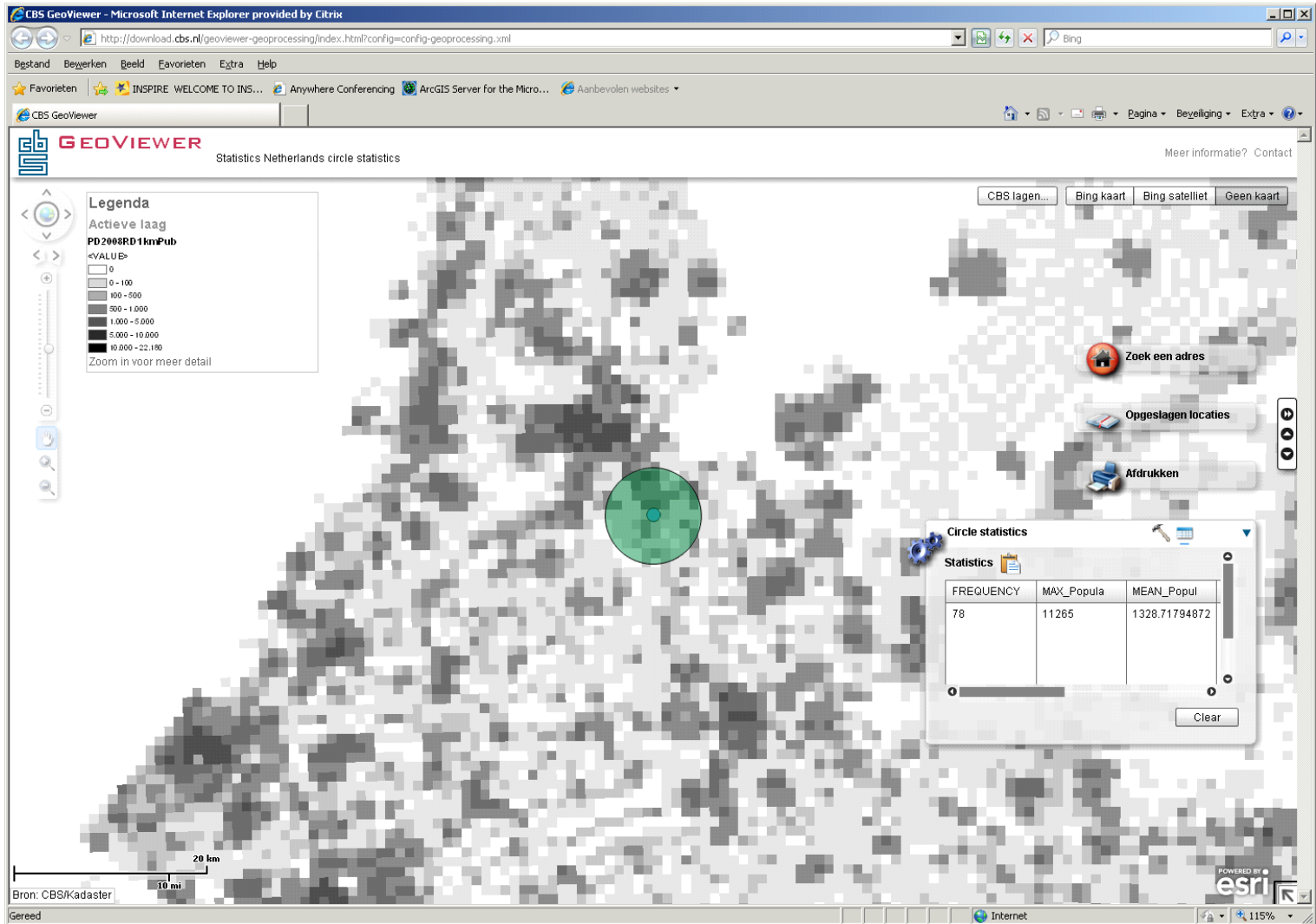


Use: Flex viewers

http://demo.esri.nl/flexviewer2.4/?config=cbs_Gp.xml

<http://download.cbs.nl/geoviewer-geoprocessing/index.html?config=config-geoprocessing.xml>

Demo



Future Steps

- Other shapes
- Other calculations
- Other grid-based data: 100 m grids
- Improved viewer

Conclusions

- The concept has been proved
 - GIS functionality can be added to the map.
 - Interaction of the user with the grid data is possible
- We have shown the extra value that grid data and web geoprocessing can give to each other

Many thanks to ESRI Netherlands

Thank you for your attention!

Are there any questions?